

Good News Gathering

# Vision Night 2009

---

# Risk

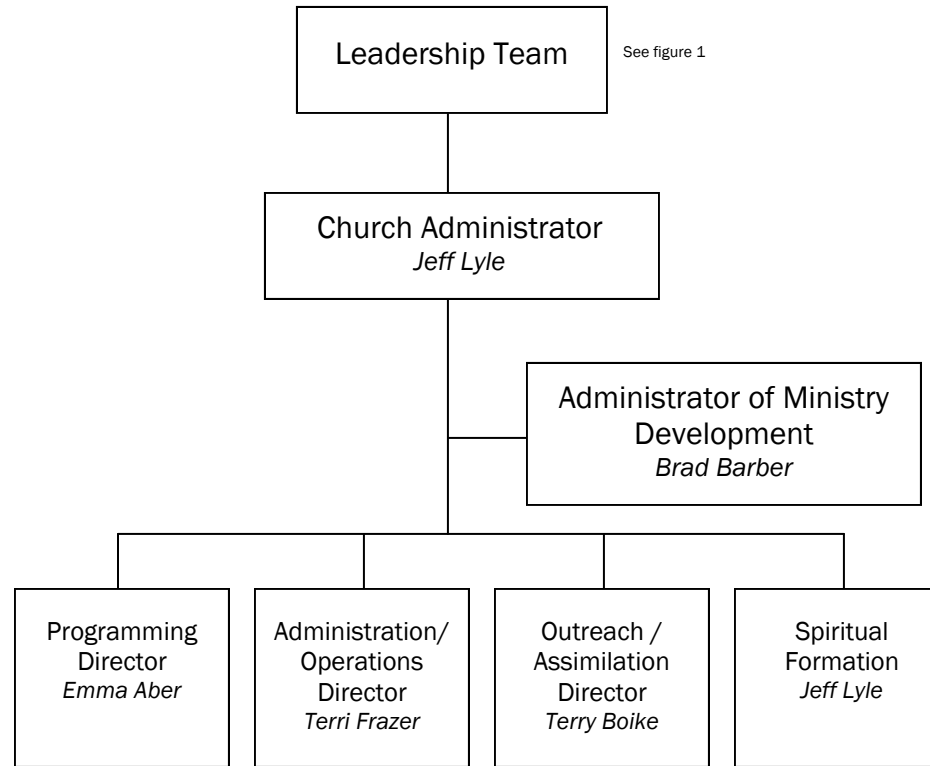
**Our Purpose:**

*To develop seekers into fully functioning followers of Christ*

---

**Risk • Bold • Go**

## GNG Organizational Structure



See figure 2

### Our Values

1. **Grace:** *Each member accepting God's grace and extending it to others*
2. **Outreach:** *Each member developing Christ's passion for the lost*
3. **Growth:** *Each member developing Christ-like priorities, character and actions*
4. **Groups:** *Each member engaged in authentic community*
5. **Service:** *Each member engaged in gift-based, team oriented service*
6. **Excellence:** *Each member giving their very best to God*

Figure 1

## Leadership Team

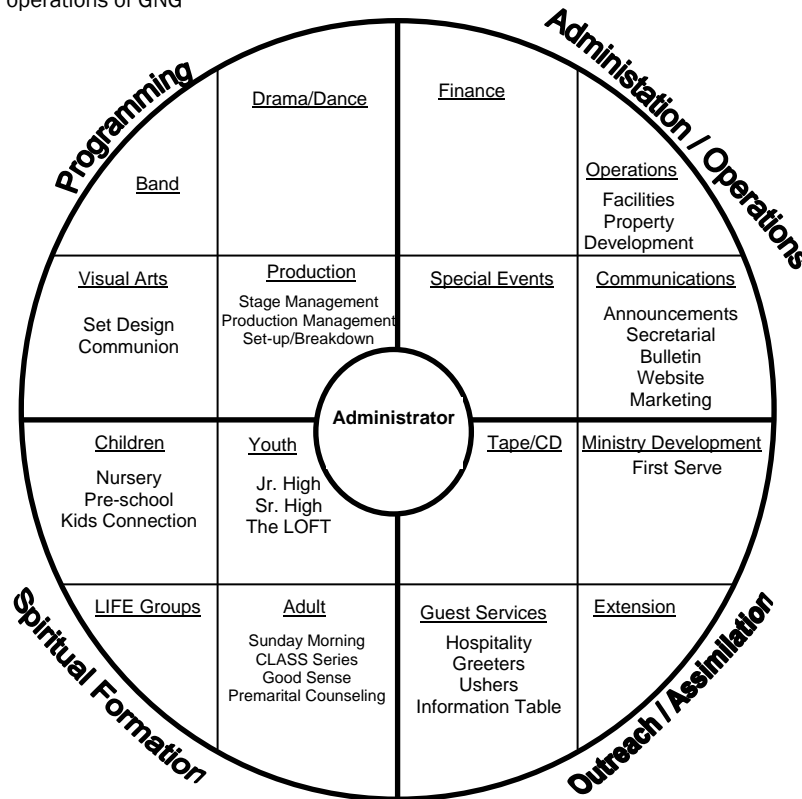
The Leadership Team is the governing body of Good News Gathering. They meet monthly to prayerfully consider the direction of GNG. Their focus is the purpose, vision, values, framework and budgetary issues.

Emma Aber  
 Jay Frazer  
 Karen Kenner  
 Jeff Lyle  
 Steve Patton  
 Doug Savage  
 Joni Willer

Figure 2

## Directors

The Directors are the immediate overseers of the ministries within their area. See the chart below that we call "The Big Four." They focus on the day-to-day operations of GNG



## Programming

Ministry	Leader
<u>Band</u>	JD Lyle
<u>Drama/Dance</u>	Cathy Savage Lynn Lowell
<u>Production Management</u>	Jenny Cameron
<ul style="list-style-type: none"> <li>• Lighting</li> <li>• Multimedia</li> <li>• Sound</li> <li>• Stage Management</li> </ul>	Jay Frazer
<u>Visual Arts</u>	Letty Allen

## Outreach / Assimilation

Ministry	Leader
<u>Extension Ministry</u>	Don Tener
<u>Guest Services</u>	
<ul style="list-style-type: none"> <li>• Hospitality</li> <li>• Greeters</li> <li>• Information Table</li> </ul>	Connie Williams Karen Kenner Patti Lengefeld
<u>Ministry Development</u>	Brad Barber
<u>Tape / CD Ministry</u>	Laura Catron

## Administration/Operations

Ministry	Leader
<u>Communications</u>	
<ul style="list-style-type: none"> <li>• Announcements</li> <li>• Secretarial</li> <li>• Bulletin</li> <li>• Website</li> <li>• Marketing</li> </ul>	Shannon Eaton Cheryl Lyle Mindy Rankin Brad Barber Terri Frazer
<u>Finance</u>	Paula Kiser
<u>Operations</u>	
<ul style="list-style-type: none"> <li>• Facilities</li> <li>• Property Development</li> </ul>	Steve Patton
<u>Special Events</u>	Mary Gross

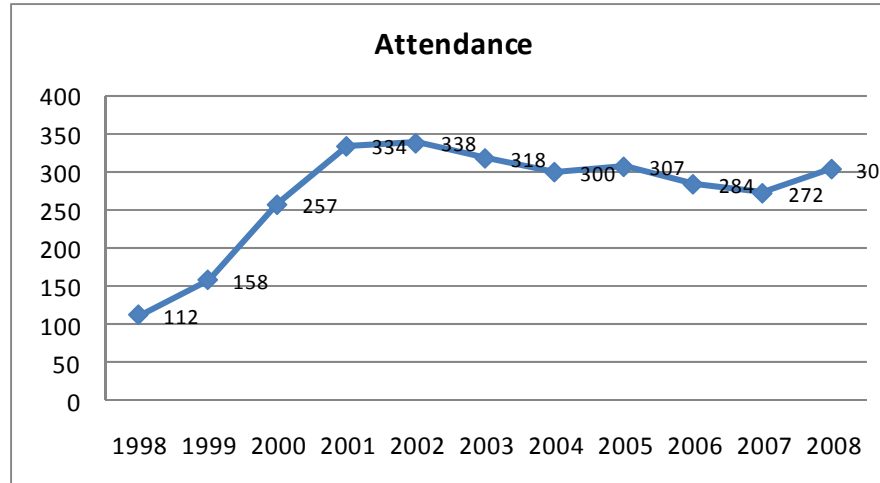
## Spiritual Formation

Ministry	Leader
<u>Adult Education</u>	
<ul style="list-style-type: none"> <li>• Sunday Morning</li> <li>• CLASS Series</li> <li>• Good Sense</li> <li>• Premarital</li> </ul>	Jeff Lyle Jeff Lyle Garry Priest Brad Barber
<u>Children's Ministry</u>	
<ul style="list-style-type: none"> <li>• Nursery</li> <li>• Preschool</li> <li>• Kids Connection</li> </ul>	Darlene Mihalik Darlene Mihalik Doug Baker and Doug Savage
<u>Youth Ministry</u>	
<ul style="list-style-type: none"> <li>• Jr. High</li> <li>• Sr. High</li> <li>• The Loft</li> </ul>	Stephanie Lengefeld Mar & Lisa Williams Randy Butler
<u>LIFE Group</u>	Patti Lengefeld



If you are interested in serving in one of these ministries, please pick up a First Serve catalog at the Information table on Sunday morning or call the office. First Serve is a way to explore different ministries GNG has to offer without feeling obligated to stay if it is a bad fit.

### 10 Year Attendance Chart



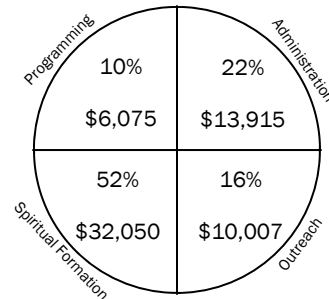
### 2009 Financials

Projected Income for 2009 \$240,000

Fixed Costs: Rent, Utilities, Telephone, \$158,875  
 Property Tax, Salaries,  
 Licenses, Insurance

Property Development Savings (8%) \$19,018  
\$171,893

Available to Ministries: \$62,107

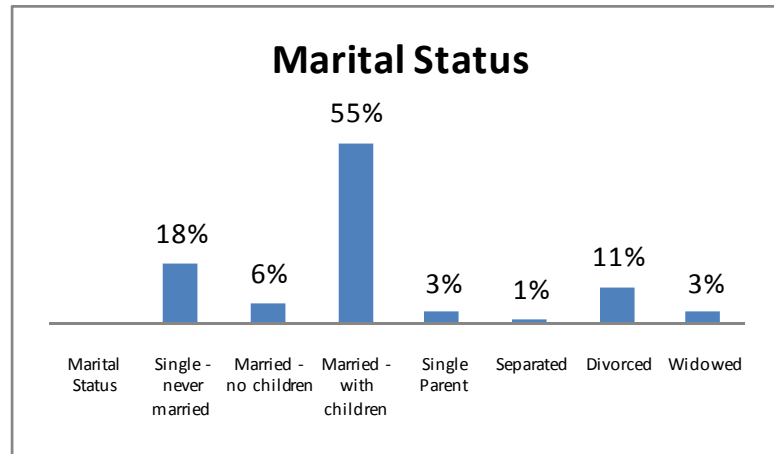
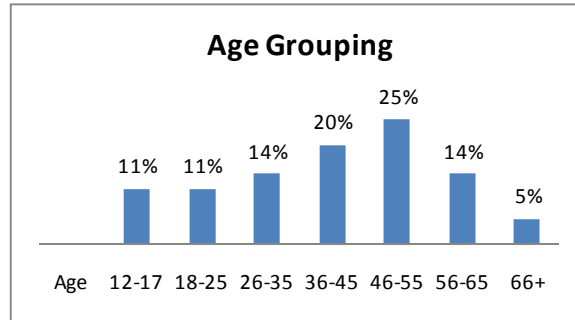


Other Funds:

Checking (as of 2-1-09) \$39,664.08  
 CD's \$104,016.32  
 Stocks \$5,187.50

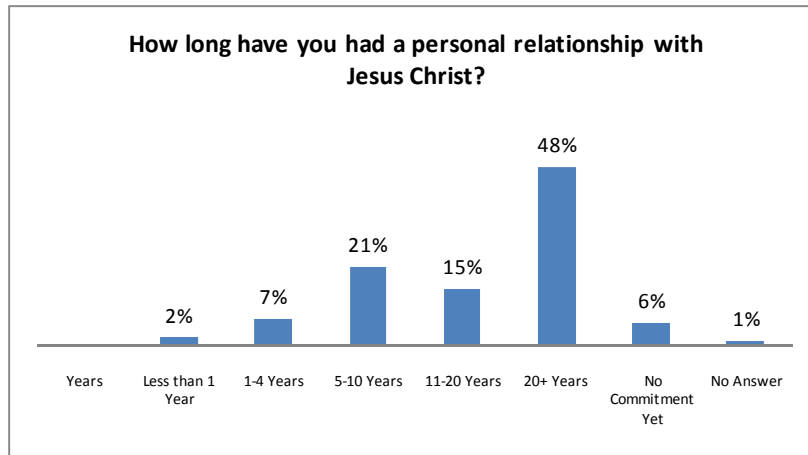
### Critical Success Factor Survey

Recently you were asked to fill out the Critical Success Factor survey which allows the Leadership Team to know where the church needs to focus time and resources. Here are the results of the 2009 CSF survey.



#### Which statement best describes you and your relationship with Jesus Christ?

1. I have only recently heard about Jesus	0%
2. I know some about Jesus and want to know more	2%
3. I know some about Jesus but am not in a personal relationship with Him	3%
4. I understand about faith in Jesus but have not made a personal commitment to Him	6%
5. I believe in Jesus and have made a personal commitment to Him	11%
6. I am committed to Jesus and understand Bible basics	11%
7. I am committed to Jesus and understand enough about Bible basics to put them into practice	23%
8. I am committed to Jesus and am striving to apply the Bible to every area of life	45%
No Answer	2%



How long have you attended GNG?		How often do you attend?	
1. Just Visiting	4%	1. 4 times per month	67%
2. 3 months or less	11%	2. 3 times per month	19%
3. 4-6 months	5%	3. 2 times per month	3%
4. 7-11 months	3%	4. 1 time per month	1%
5. 1-2 years	13%	5. Several times a year	3%
6. 3-4 years	14%	6. I recently began attending	6%
7. 5-6 years	12%	No Answer	2%
8. 7-8 years	17%		
9. 9+ years	21%		

**Which of the following describes your membership connection to GNG?**

1. I am a member	49%
2. I'm a regular attendee	30%
3. I'm a new attendee	6%
4. I'm a visitor	2%
5. I intend to become a member in the future	4%
6. I am uncertain or undecided about becoming a member	4%
7. I consider a church other than GNG to be my church home	1%
8. At this time, I do not intend to become a member	0%
9. I don't know how to answer this question	2%

Attended CLASS 101?	Attended CLASS 201?	Attended CLASS 301?	Attended CLASS 401?
Yes—53%	Yes—47%	Yes—40%	Yes—33%
No—46%	No—52%	No—57%	No—63%
No Answer—1%	No Answer—1%	No Answer—3%	No Answer—4%

**Which statement best describes your participation in a LIFE Group?**

1. I do not belong to a LIFE Group and am not interested in joining one	21%
2. I do not belong to a LIFE Group but am interested in joining one	21%
3. I belong to a LIFE Group	40%
4. I belong to a small group for spiritual growth, but it's not a GNG group	3%
5. I used to be in a GNG LIFE Group, but I am not at this time	14%
No Answer	2%

**Which statement best describes your current volunteer service at GNG?**

1. I have not volunteered at GNG	31%
2. Although I used to volunteer, I am not serving at this time	13%
3. I volunteer once or twice a year	6%
4. I volunteer several times a year	10%
5. I volunteer at least once a month	20%
6. I volunteer weekly	19%
No Answer	1%

**During the past six months, how many times did you invite an individual or a family to attend GNG with you? (include repeated invitations to the same person or family, include invitations even if they did not attend)**

1. 1 invitation	11%
2. 2 invitations	14%
3. 3 invitations	12%
4. 4 invitations	12%
5. 5 invitations	15%
6. More than 5 invitations	13%
7. I did not extend any invitations	21%
No Answer	2%

**The reasons I do not bring guests with me to GNG more often are (check all that apply):**

1. I don't think the topics would be of interest to my friends	1%
2. I don't think it is up to me to bring people to church	2%
3. I don't know anyone to invite	6%
4. I don't like being pushy about spiritual stuff	18%
5. Most people I know are not interested in church	8%
6. I don't have very many non-churched friends	28%
7. I am not comfortable bringing friends to GNG	1%
8. Other	21%
No Answer	27%

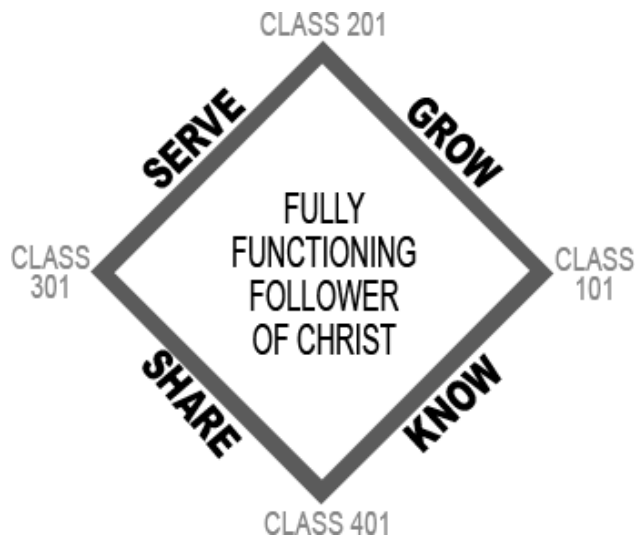
Which statement best reflects your current opinion about growth at GNG?

1. I want GNG to grow	55%
2. I will personally sacrifice for growth	27%
3. I want GNG to grow, but am concerned about the changes growth brings	9%
4. I want to stay the size we are	0%
5. I wish GNG was smaller than it is now	0%
6. I think too much emphasis is placed on growth	1%
7. I don't care whether we grow or not	2%
No Answer	6%

How did you first hear about GNG?

1. Family	43%
2. Website	4%
3. Mailer	5%
4. Billboard	5%
5. Personal Invitation	24%
6. The LOFT	2%
7. LIFE Group	0%
8. Newspaper Ad	2%
9. Radio	0%
10. Outreach Event	0%
11. Other	15%

**GNG's Framework**



## New Ministry Development

At GNG we are always looking for ways to reach out and serve those within the GNG family, the community and globally. We do have a process in which ministries are developed and nurtured in order to ensure that it fits with the purpose, values and framework of GNG as a whole.

- GNG will try NOT to duplicate already existing services. If someone (a church, an individual or organization) is doing something better than we can, then we will support them either monetarily or through volunteers. For example, GNG will not have a food pantry since Samaritan Outreach Services already does it. We will support them through the Extension Ministry and volunteers.
- We liken GNG to a laboratory; we will try almost anything (that fits our purpose, vision, values and framework). If something blows up, we don't consider it a failure, rather simply a lesson learned.
- We have no "sacred cows." If a ministry no longer works or has outlived its effectiveness, we kill it! Sacred cows make great hamburger!
- It is not the job of GNG staff to make sure a ministry happens or continues. If there is no interest by the congregation to keep it going either through finances or volunteering....we will allow it to cease!

If you have a suggestion for a ministry, the first step is to contact Brad Barber, Administrator of Ministry Development. He will work with you to determine if it fits the purpose, vision, values and framework of GNG, develop a "playbook," and develop strategies to make your dream a reality.

**Note:** You must be willing to work to make the ministry happen through your time and talents. If not, the ministry will be killed and eaten like a "sacred cow."

To contact Brad:  
Office 937-393-5383  
Office Cell 937-763-4904  
[brad@goodnewsgathering.org](mailto:brad@goodnewsgathering.org)

---

## Our Vision

We strive to become an outward focused  
community of committed Christians

## Future Facility Philosophy

We believe that we must think of meeting our facility needs as a multi-phase process. In each phase we must remember the following principle:

### **A Church Should Build Only When It Can Do So Without Shifting Its Focus From Ministering To People To Building A Building.**

1. Buildings do not cause growth. The most a building can do is facilitate growth.
2. Buildings are ministry tools to be used to meet the needs of an outward focused church and the community. Buildings are not "sacred space."
3. A church needs more space only when it is fully using the space it already has.
4. GNG should build only when it can do so within the income God has provided and without using funds needed for present and future ministries to people.

#### A. GOALS FOR PHASE I

1. Remain focused on our Purpose, Vision, Values and Framework
2. Replicate current services

#### B. COST

1. Estimated range: \$800,000.00 to 1.2 Million
2. To raise as much of the cost as possible with a floor of 35%
3. To retire any debt within 5 to 7 years

#### C. FUNCTIONALITY

1. Easy to Grow - Expandable
2. Replicating current services
3. Multi-Functional

#### D. TIME FRAME

1. Out of SSCC by 2012 or 2014
2. SSCC may agree to two year extensions beyond 2014

#### E. SIZE

1. Seat 400-500 in adult setting with staging
2. Nursery/Pre-K/Kid Connection: 70
3. Storage

## Future Facility Milestones

	<b>Completion Date</b>
<p><b>Milestone 1: Complete Due Diligence</b></p> <p>By 4-1-2009, we will have done all the gathering of information regarding building on our property or selling our property and either buying other vacant property or renovating an existing building. Assign different options to be argued for by different L.T. members.</p>	<p>March 2009</p>
<p><b>Milestone 2: Decision On Due Diligence</b></p> <p>A Saturday meeting scheduled for as much time as we need to hash through the options and settle on which direction we need to go.</p>	<p>April 2009</p>
<p><b>Milestone 3: Communicating The Decision To The Church</b></p> <p>We will communicate this decision to the Church in May, 2009.</p>	<p>May 2009</p>
<p><b>Milestone 4: Ministry Needs / Goals / Outreach Orientation For The Proposed Facility</b></p> <p>This Milestone will require us to meet with the various ministries to determine their needs and ministry goals.</p>	<p>August 2009</p>
<p><b>Milestone 5: Design Phase</b></p> <p>From August through December we will consider different designs and design/construction firms.</p>	<p>December 2009</p>
<p><b>Milestone 6: VISION NIGHT 2010</b></p> <p>Unveil the design to the congregation.</p>	<p>January 2010</p>
<p><b>Milestone 7: CAPITAL CAMPAIGN</b></p> <p>Begin Capital Campaign that is compatible with GNG's ministry philosophy</p>	<p>January 2010</p>

## **2008 BHAGs Review** (*Big Hairy Audacious Goals*)

### **CSF # 1: Everyone Connected**

- Our BHAG was to form 10 new LIFE Groups. In 2008, we formed 6 new LIFE Groups and exposed a number of people to group life through short term group environments in GNG University.

### **CSF # 2: Everyone Involved**

- Our BHAG was to shift the majority of our leadership training from off-site conference settings to in-house training. Each of GNG's four ministry areas (Programming, Administration, Outreach/Assimilation and Spiritual Formation) conducted an in-house training event.

### **CSF # 3: Everyone Reached**

- Our BHAG was to create and fund the Extension Ministry which would be the giving arm of the church. The team was able to select our international partner, LaCroix New Testament Mission in Haiti, and partnered with several local organizations. Funding was handled through an offering taken at the Christmas Eve Service, which totaled over \$7200 this year.

## **2009 BHAGs** (*Big Hairy Audacious Goals*)

BHAGs are developed based on our critical success factors.

### **CSF # 1: Everyone Connected**

- To develop 10 new LIFE Group Leaders or Leader Couples.

### **CSF # 2: Everyone Involved**

- To involve 65% of our regular attendees in serving.

### **CSF # 3: Everyone Reached**

- To involve 85% of our regular attendees in some form of outreach to our community locally and/or globally.

## **REVEAL**

In order to get a handle on the spiritual health of our church, GNG will be conducting the REVEAL Spiritual Life Survey beginning on Sunday, February 8th and ending on Saturday, February 21st. We want to know what is helping our people grow spiritually and what is getting in the way. The survey findings will help shape our decisions about how to create the best possible ministry strategies to serve our people. The survey will take approximately 20-25 minutes to complete and can be accessed on-line at:

**[www.revealnow.com/slsurvey?uid=5420](http://www.revealnow.com/slsurvey?uid=5420)**

If you do not have internet access, schedule a time to take the survey at the church office by calling 393-5383.

**Notes**



## Good News Gathering

139 E. Beech St  
Hillsboro, OH 45133

Phone: 937-393-5383  
E-mail: [info@goodnewsgathering.org](mailto:info@goodnewsgathering.org)  
Website: [www.goodnewsgathering.org](http://www.goodnewsgathering.org)